

# A School Comes To Woodhouse Eaves: talk to Local History Group, September 2018



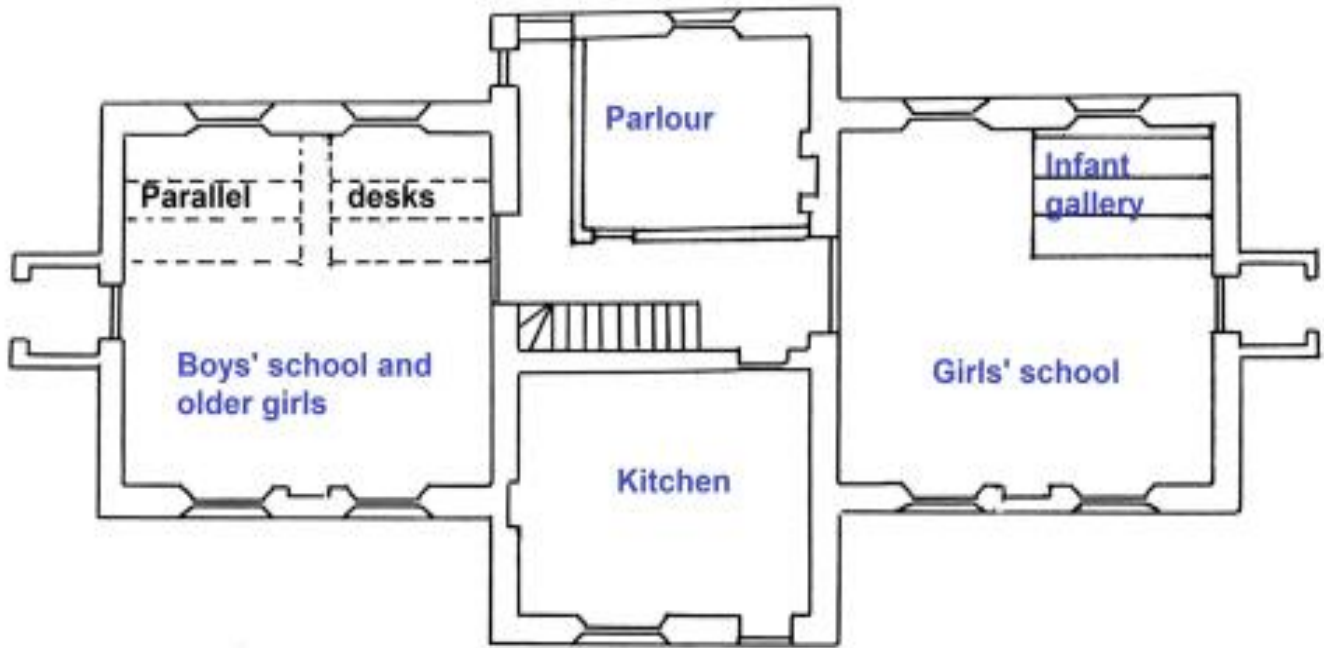
Front elevation of the school – 1838.



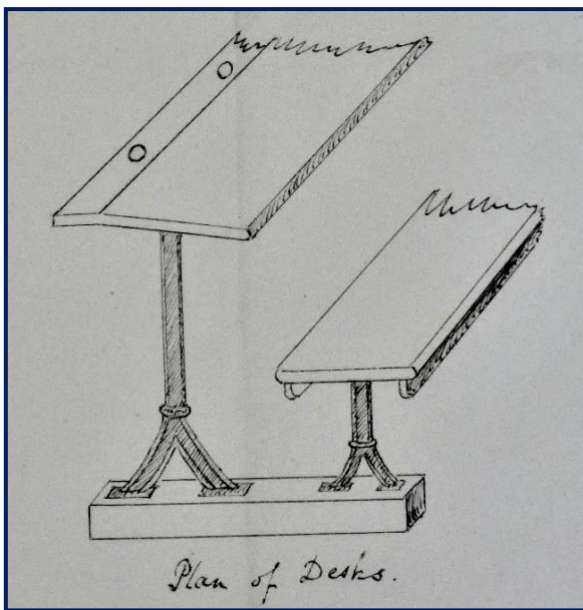
Sketch of the school, extended in the late 19<sup>th</sup> century.



The school today  
– a terrace of  
private houses on  
Church Hill



**Floor plan of the school in 1838, with the parlour facing Church Hill. The central section was accommodation for the school teachers and their family – sleeping quarters upstairs.**



**The older children sat in rows of parallel desks.**

**The infants sat in a raked gallery, the youngest children, often only three years old, sitting at the front.**

